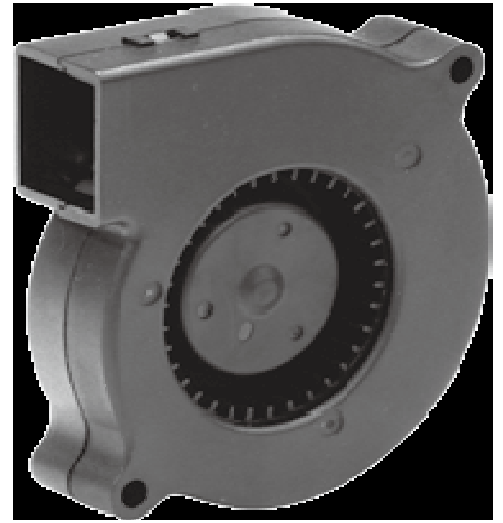


## 75 DC Blower

× 75 × 20mm



### General Specifications

- Motor : 6 Poles brushless DC motor
- Frame & Impeller: Plastic (UL 94V-0)
- Storage temperature : -40° to +75°
- Operating temperature : -10° to +70°

### Major Characteristic Parameters

品牌	轴承	电压	启动电压	电流	功率	转速	风量	静压	噪音		
型号	B/S	V	V	A	W	RPM	m3/min	CFM	mm-H2O	In-H2O	dba
SP75B05L-20DL	B/S	5	4.5~5.5	0.26	1.30	2800	0.17	6.07	13.36	0.56	32.5
SP75B12L-20DL	B/S	12	7.0~13.2	0.13	1.56	2800	0.17	6.07	13.36	0.56	32.5
SP75B24H-20DL	B/S	12	7.0~13.2	0.31	3.72	4000	0.23	8.52	26.27	1.03	42.0

\*Bearing system B: Two Ball Bearing S: Sleeve Bearing

